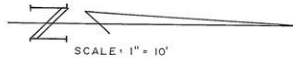


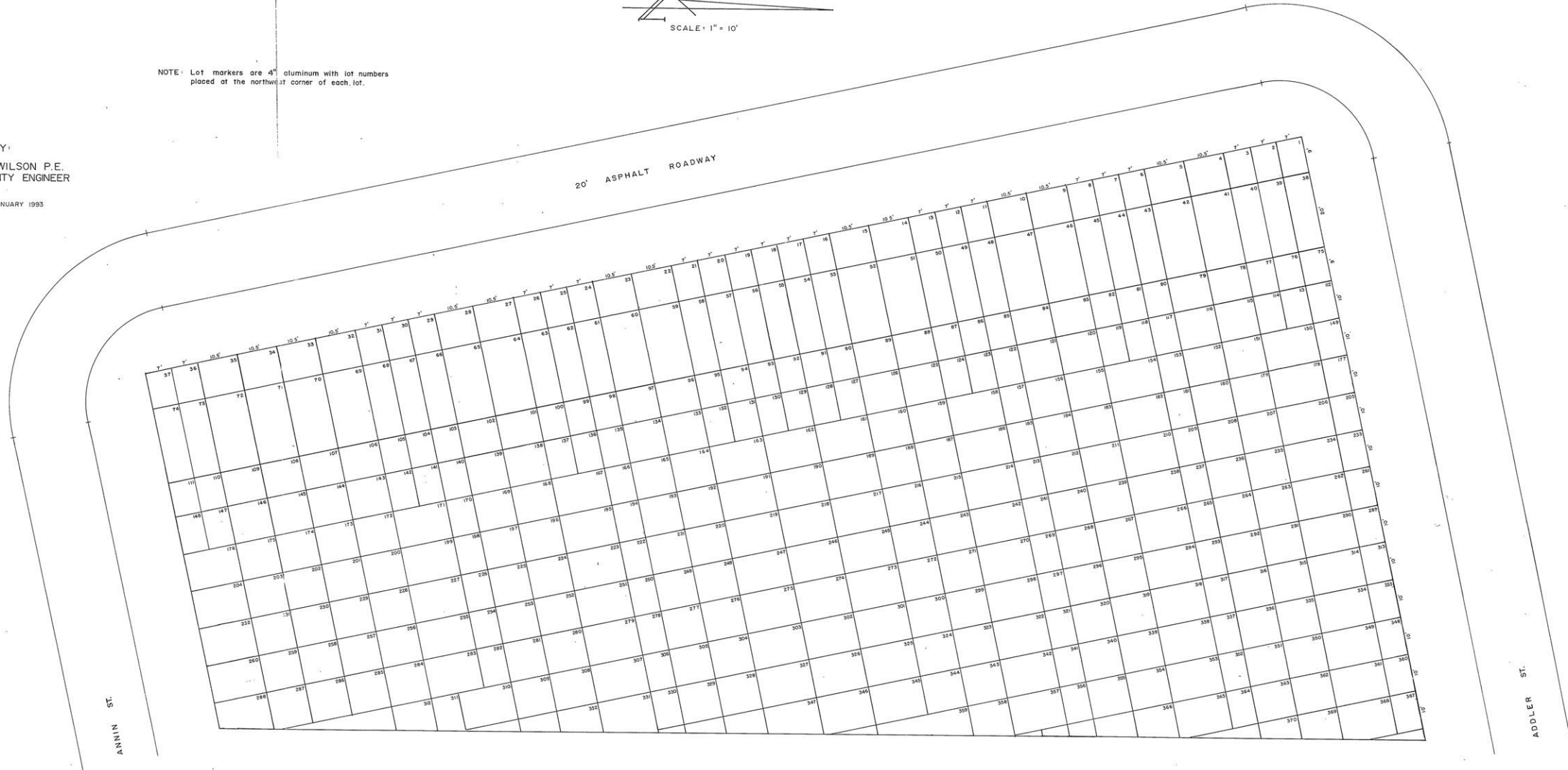
SPRINGFIELD TOWNSHIP CEMETERY ADDITION  
SECTION 17-J



NOTE: Lot markers are 4" aluminum with lot numbers placed at the northwest corner of each lot.

PREPARED BY:  
GEORGE F. WILSON P.E.  
LUCAS COUNTY ENGINEER

DRAWN: RTW, JANUARY 1993



ANNIN ST.

ADDLER ST.